

EMERALD LAKES PHASES XI & XII

BEING A REPLAT OF A PORTION OF TRACT 1, EMERALD LAKES AS RECORDED IN PLAT BOOK 9, PAGE 22 OF THE PUBLIC RECORDS OF MARTIN COUNTY, FLORIDA.

SECTIONS 25 AND 36, TOWNSHIP 38 SOUTH, RANGE 41 EAST

SHEET 2 OF 2

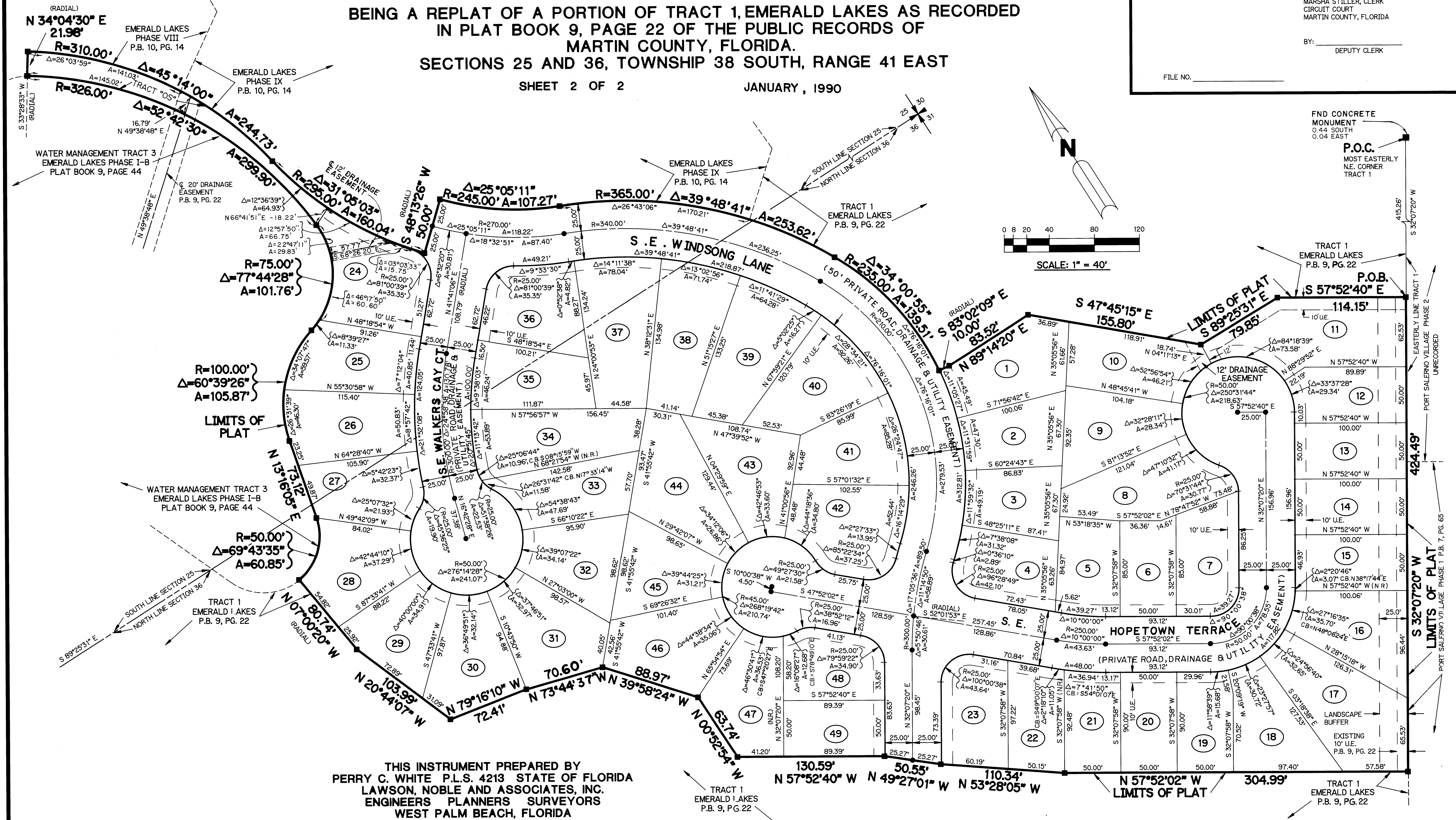
JANUARY, 1990

I, MARSHA STILLER, CLERK OF THE CIRCUIT COURT OF MARTIN COUNTY FLORIDA, HEREBY CERTIFY THAT THIS PLAT WAS FILED FOR RECORD IN PLAT BOOK 12, PAGE 38, MARTIN COUNTY, FLORIDA, PUBLIC RECORDS THIS DAY OF _____, 1990.

MARSHA STILLER, CLERK
CIRCUIT COURT
MARTIN COUNTY, FLORIDA

BY: _____
DEPUTY CLERK

FILE NO. _____



THIS INSTRUMENT PREPARED BY
PERRY C. WHITE P.L.S. 4213 STATE OF FLORIDA
LAWSON, NOBLE AND ASSOCIATES, INC.
ENGINEERS PLANNERS SURVEYORS
WEST PALM BEACH, FLORIDA